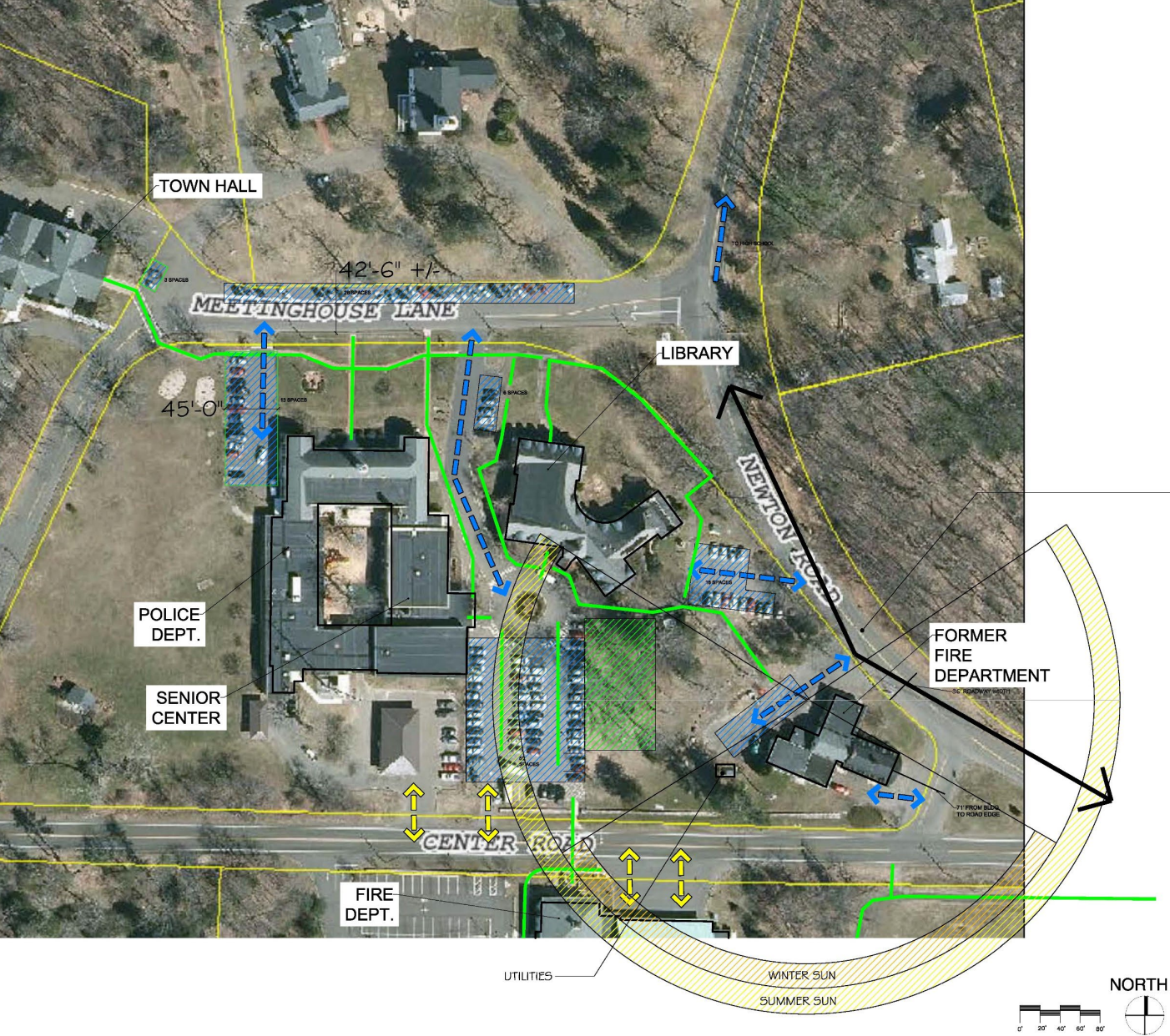




WOODBIDGE COMMUNITY & CULTURAL CENTER

January 25, 2023

PROPOSED SITE IMPROVEMENTS



PARKING SPACES:
Large Lot - 59
Library Lot - 16 + 6
Meetinghouse Lane - 20
Town Hall (near) - 13 (+3 front)

TOTAL = 117 SPACES

LEGEND

- PEDESTRIAN ROUTE
- VEHICLE ROUTE
- EMERGENCY ROUTE
- PARKING AREA
- GREEN SPACE (BOCCI)

TOWN HALL

RECONFIGURE INTERSECTION

PARALLEL PARKING

2

EXPAND PARKING

CENTER BUILDING

LIBRARY

POLICE DEPARTMENT

SHUFFLEBOARD

HORSESHOES

GARDEN AREA

OPEN FREE SPACE

FIREHOUSE

AMPHITHEATRE

POLLINATOR GARDEN/ READING SPACE

SCULPTURE

BOCCI

GENERATOR

PARKING

PAVILLION W/ PATIO

PASSENGER DROP-OFF

PATIO

COMMUNITY & CULTURAL CENTER

BAY 3

BAY 2

BAY 1

PATIO

FIELDSTONE WALL

PEDESTRIAN CROSSING FOR TRAIL ACCESS

1

NORTH

0' 15' 30' 45' 60'

Campus Plan

MASTER PLAN

Woodbridge Community Center
WOODBRIDGE, CONNECTICUT

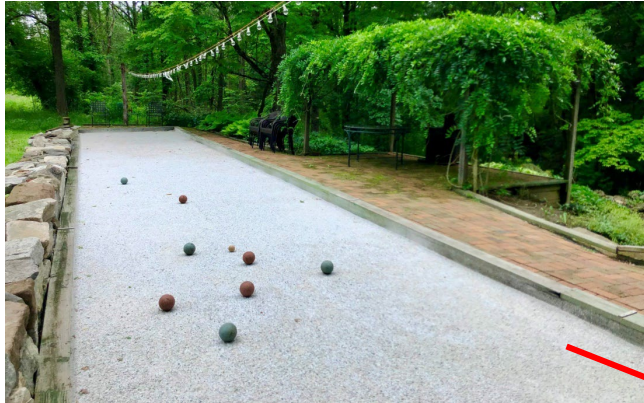
ARIS LAND STUDIO
Sustainability • Land Architecture

1000 West
Beverly Hills, CA 90212
(310) 205-1000

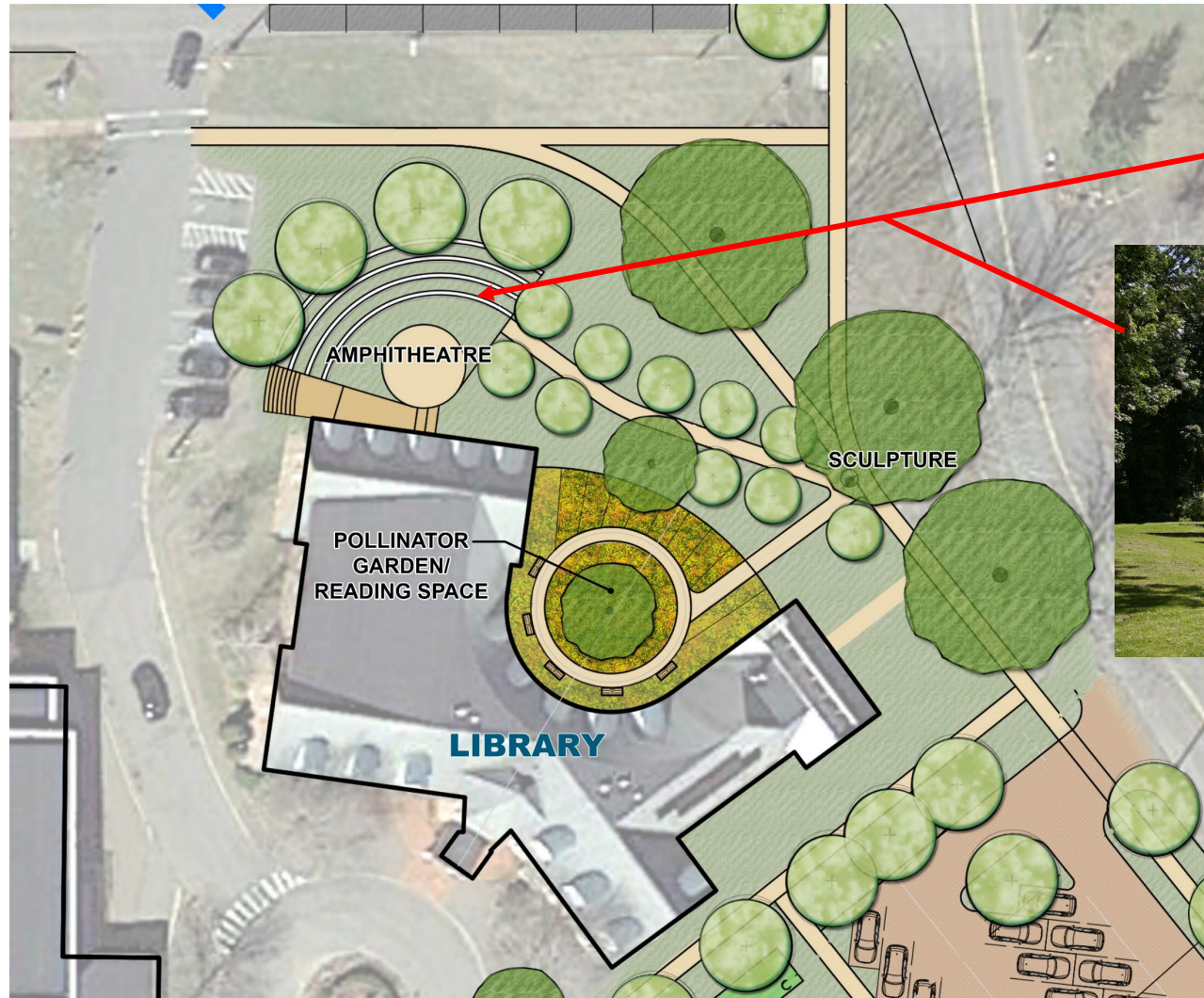
DATE: 1/13/2022
DESIGNER: ARIS
PREPARED BY: ARIS
DWG. NO.: 001

ALD CONTRACT NO. 22-3-1.3 (Drawn by:) SCALE: 1"=30'

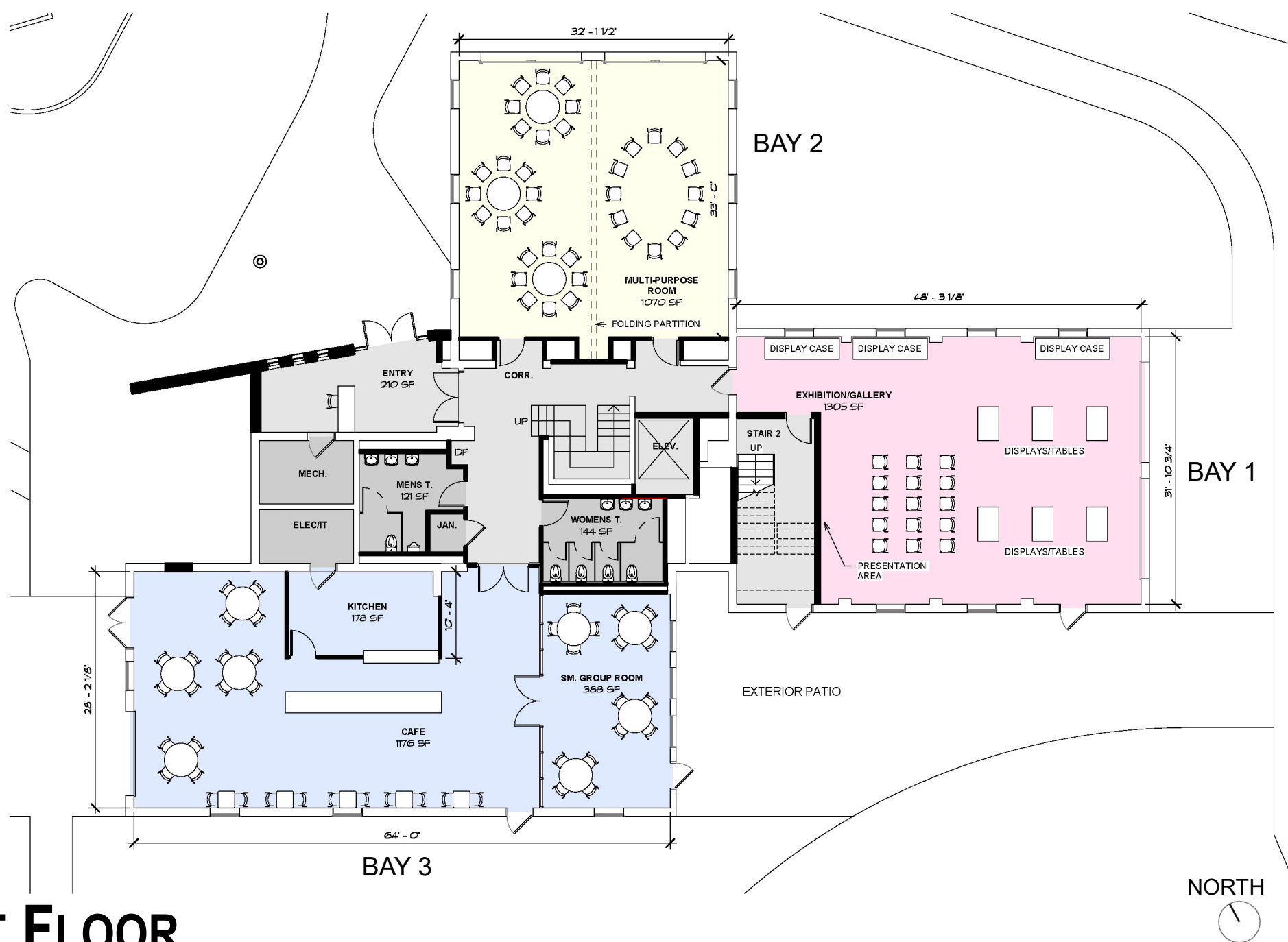
PROPOSED SITE IMPROVEMENTS



PROPOSED SITE IMPROVEMENTS



FIRST FLOOR



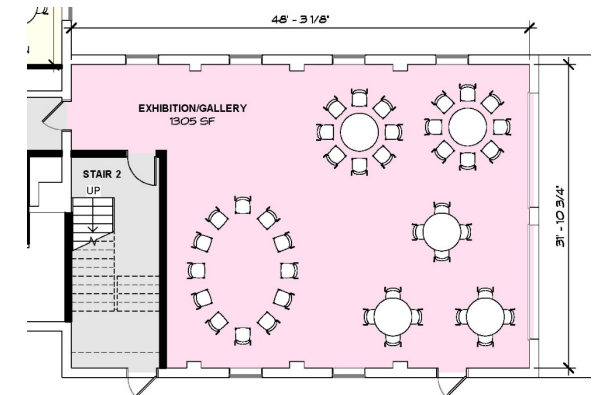
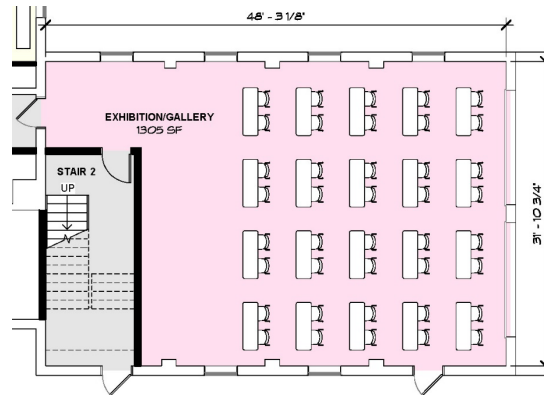
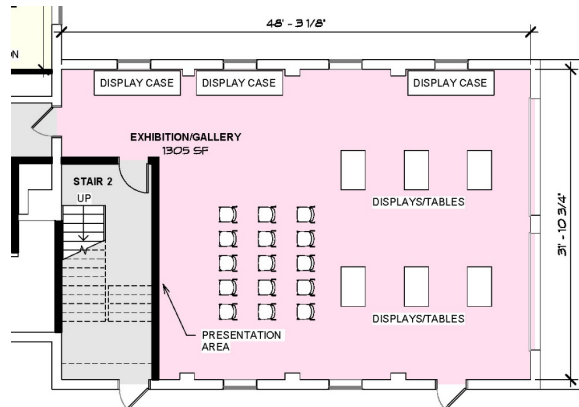


LARGE LECTURE/EXHIBITION SPACE

FLEXIBLE SEATING



CO-WORKING SPACES



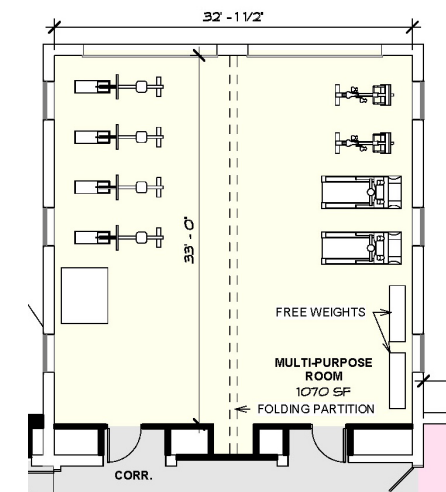
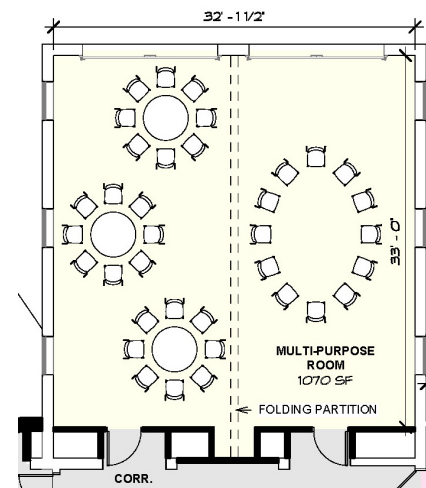
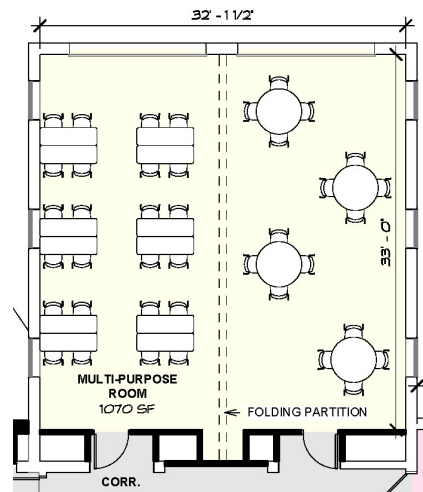
FIRST FLOOR – EXHIBITION/LECTURE/GALLERY (BAY 1)

LECTURE/CLASSROOM SPACES



GATHERING SPACES

FITNESS/RECREATION SPACE

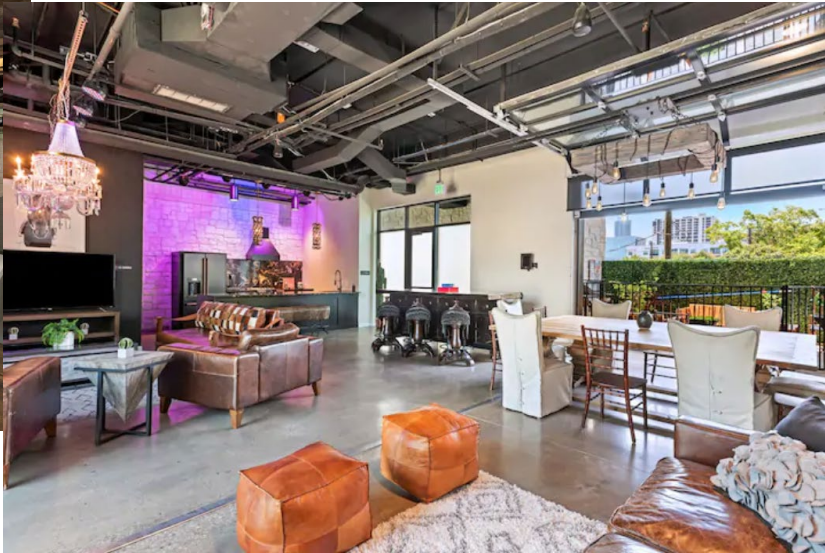


FIRST FLOOR – MULTI-PURPOSE ROOM (BAY 2)

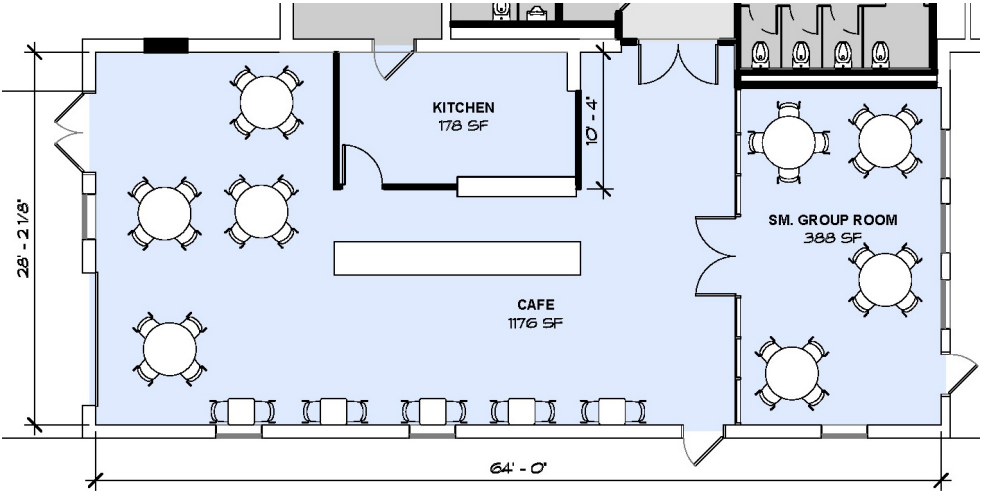
CULINARY CLASSES



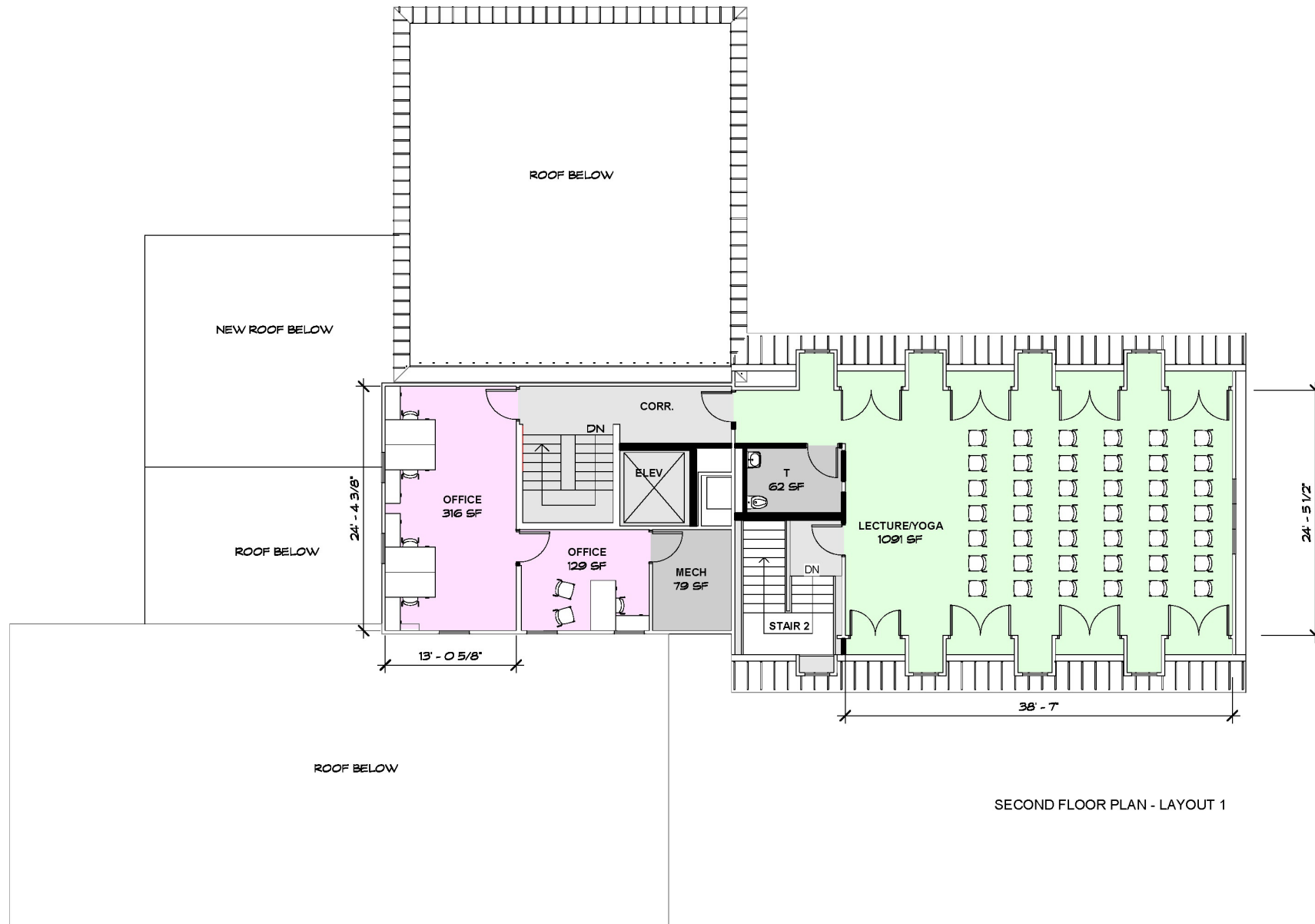
CAFÉ STYLE KITCHEN & SERVICE COUNTER



VARIED SEATING FOR GATHERING



FIRST FLOOR – CAFÉ (BAY 3)



SECOND FLOOR PLAN - LAYOUT 1

SECOND FLOOR





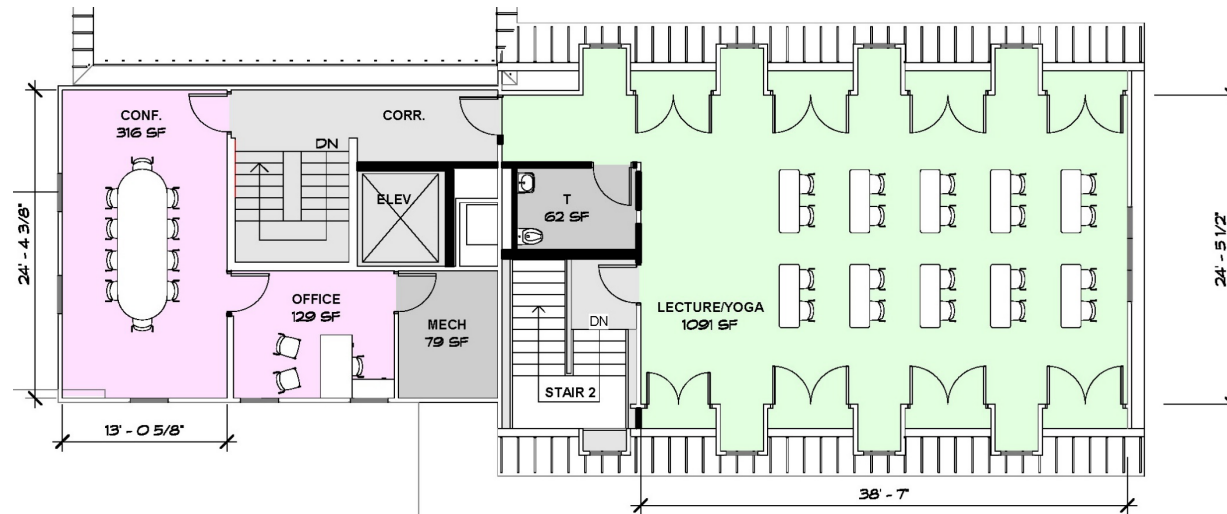
CONFERENCE/MEETING ROOM



OPEN LECTURE SPACE



YOGA/FITNESS CLASSES



SECOND FLOOR – LECTURE/YOGA & OFFICE SUITE



NEW PATIO SPACE
BEHIND STONE WALL

ORIGINAL BAY TO REMAIN
BAY DOORS TO BE
REPLACED
NEW SIDEWALK TO
EXTEND TO PATIO

NEW STONE WALL
NEW CURB ALONG ROAD

VIEW OF ORIGINAL BAY



VIEW OF NEW ENTRANCE



VIEW OF NEW ENTRANCE

PROGRAM USES FOR COMMUNITY & CULTURAL CENTER

INDOOR SPACES

- **Meeting Spaces** for clubs, organizations, groups of residents; small & large spaces to accommodate large lectures & performances with appropriate technology
- **Gathering Spaces** for events, parties, young families, teens after school, comfortable furniture for all age groups, games, books, etc., intergenerational activities for youth and seniors
- **Co-Working Space** to offer a change of venue for those working from home
- **Café/Kitchen** to host café/bistro, cooking classes and expand the types of events that can be held at the center
- **Exhibition Space** for art, historical memorabilia & other informational exhibits
- **Recreation Space** for yoga, aerobics, Zumba & other group exercise & recreational activities
- **Welcome/Reception Desk**

OUTDOOR SPACES

- Outdoor Pavilion
- Outdoor Amphitheatre
- Shady Area for Children to Play
- Benches, seating areas, walking paths
- Patio with bistro seating
- Library Reading patio
- Picnic style eating area
- Butterfly garden, sculpture garden
- Outdoor grilling area pad for large events
- Parking & utility hook-ups for food trucks
- Outdoor charging stations for phones/computers

ADDITIONAL CAPACITY FOR PROGRAMS, EVENTS, RECREATION

CAPACITY OF CURRENTLY AVAILABLE SPACES

Center Building

- **Room 16** – 42 people
- **Room 13** – 36 people (temporarily closed)
- **The Center Main Room** – 130 people (under renovation)
- **Gym** – 200-450 people

Library

- **Library Meeting Room** – 40 people
- **Woodbridge Room** – 20 people
- **Study Room** – 4 people

CAPACITY OF ADDITIONAL AVAILABLE SPACES

Community & Cultural Center

- **Café** – groups of 5 to 40 people
- **Exhibition, Lecture and Gathering Space** – groups of 5 to 100 people
- **Recreation, Meeting & Multipurpose Space** – groups of 5 to 50 people
- **Lecture, Classroom, Yoga Space** – groups of 10-50 people



ARCHITECTS
ENGINEERS
INTERIORS